

+
**WE
KNOW
ENDO.**



MAILLEFER

Gutta-Smart™ + Conform Fit™ Gutta-Percha

Total Cordless Obturation Solution

The warm vertical solution
that flows together

 **Dentsply
Sirona**



Optimize your obturation with the complete, low-temperature solution

Fill canals conveniently and reliably with Gutta-Smart™ cordless obturation device and Conform Fit™ gutta-percha master cones. Designed to work together, they feature the same low-temperature flow characteristics and radiopacity for a total warm vertical obturation solution.



The efficiency of a total solution. Paired with the enhanced fit of Conform Fit™ master cones, Gutta-Smart™ provides the efficiency you expect in a complete obturation solution.



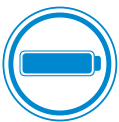
Patient safety. You can feel confident knowing the unique formula is not made with natural rubber latex.



Gutta-percha with low-temperature flow. In both Conform Fit™ master cones and Gutta-Smart™ cartridges, the gutta-percha formula flows at a lower temperature, requiring less heat from the handpieces.



The right fit you can feel. Conform Fit™ master cones provide a snug apical fit for accurate tug-back, while the cordless Gutta-Smart™ handpieces provide precise control and excellent tactile feedback.



All-day power*. A single charge gives you the power to complete an entire day's work.



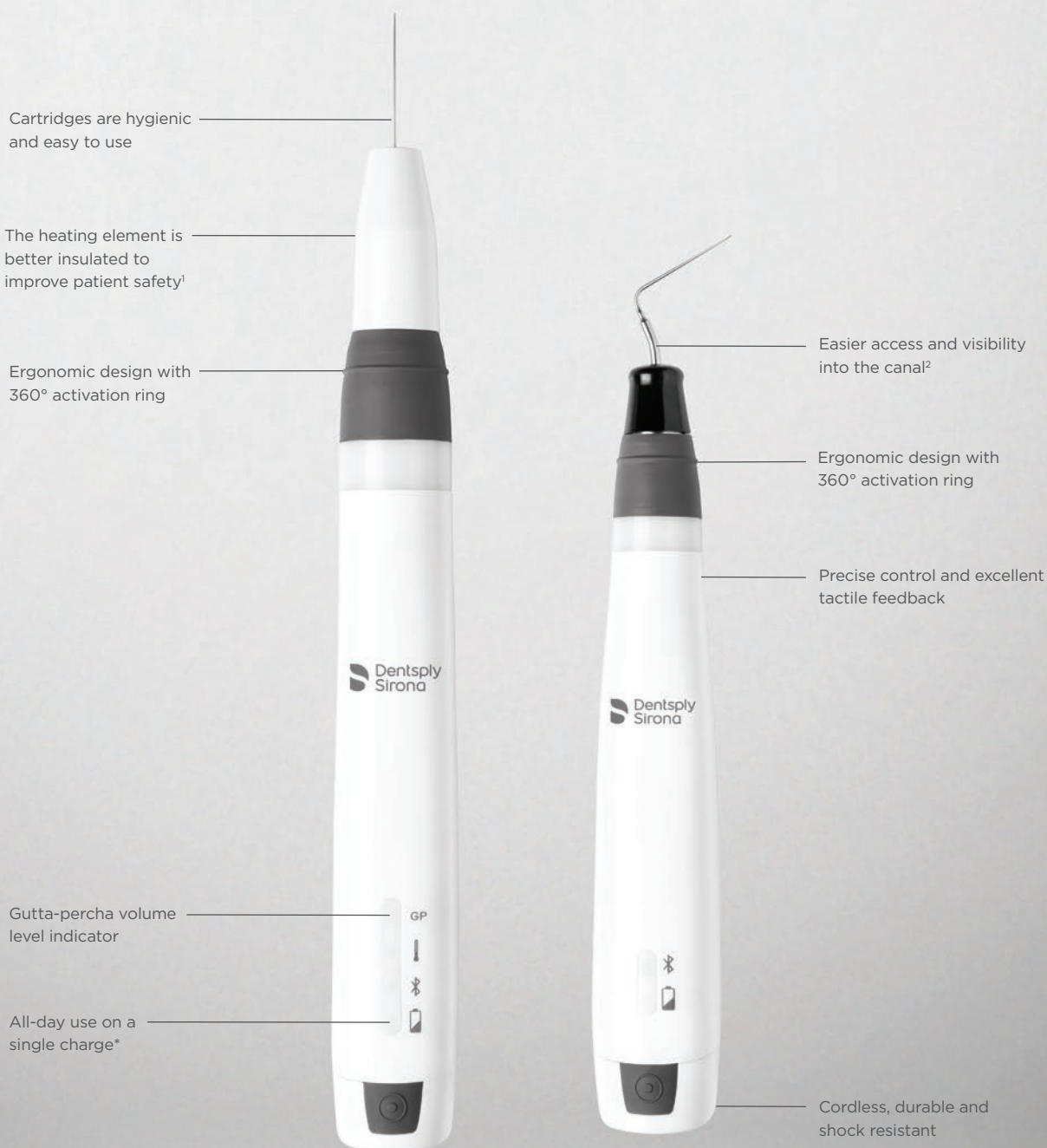
Durable, cordless performance. Well-balanced, lightweight and comfortable to use, both handpieces are cordless for freedom of movement.

*The battery capacities of the Flow and Pack handpieces allow for them to be used up to five procedures per day on a single charge.



The efficiency of a total solution

At Dentsply Sirona, we are committed to developing solutions that empower you to provide better, safer endodontics. Gutta-Smart™ provides convenient and reliable obturation when used with Conform Fit™ Gutta-Percha as a total solution.



1. As compared to Dentsply Sirona Calamus®; data available. 2. As compared to Dentsply Sirona Calamus® Dual; data available.

*The battery capacities of the Flow and Pack handpieces allow for them to be used up to five procedures per day on a single charge.



Patient safety

Unlike traditional gutta-percha, our proprietary formulation is not made with natural rubber latex. It also can be used at a lower working temperature, reducing the risk of harm to the periodontal ligament (PDL), which can be associated with higher heat.



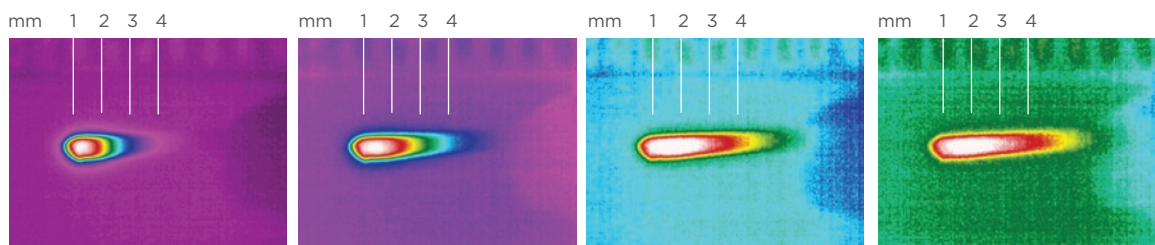
Gutta-percha with low-temperature flow

The gutta-percha formula offers advanced thermal properties that enable it to flow at a lower temperature — and allow heat transfer up to 4 mm. Its unique formula also offers optimal radiopacity and ease of retreatment.

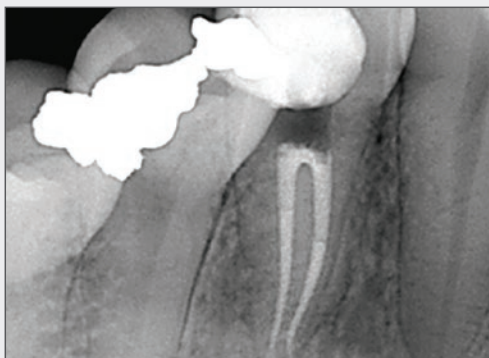
Advanced thermal properties

Heat transfers up to 4 mm beyond the heat source.

Time-lapse thermal images demonstrate the heat transference within the gutta-percha.³



Consistent fill without radiograph transition lines



Using different formulations of gutta-percha in one case can cause varying degrees of opacity.

Image courtesy of Dr. Phillip Bell, Mooresville, NC



Gutta-Smart™ and Conform Fit™ master cones feature the same advanced gutta-percha for radiographic consistency.

Image courtesy of Dr. Nathaniel Behrents, Fayetteville, AR

³. Source: Internal testing; data available.



The right fit you can feel

Precision-matched Conform Fit™ master cones deliver a superior apical fit and accurate tug-back. Used together for a total solution, Gutta-Smart™ cartridges provide consistent tactile feedback with easier access and visibility into the canal.⁴

Improved heat transfer and flow at lower temperature

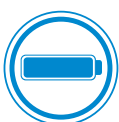
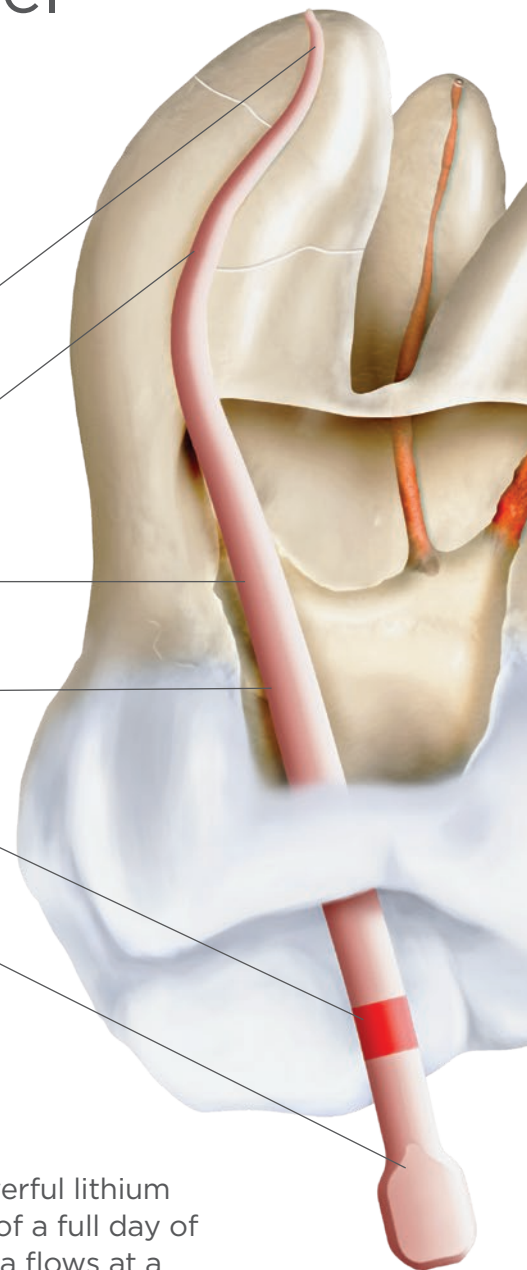
Variable taper for a precise fit and accurate tug-back

Not made with natural rubber latex for enhanced patient safety

Modern manufacturing technique for consistent shape and quality

Part of a system-based solution for simplicity

Convenient tab for easy identification and handling



All-day power*

The ergonomic Gutta-Smart™ handpieces feature a powerful lithium iron phosphate battery that gives you the convenience of a full day of treatments on a single charge. Because the gutta-percha flows at a lower temperature, the handpieces are ready to use in seconds.



Durable, cordless performance

The cordless handpieces are durable and shock resistant with a lightweight, comfortable feel. Each features a 360° activation ring for freedom of movement. In addition, the heating elements are better insulated for improved patient safety.⁵

4. As compared to Dentsply Sirona Calamus® Dual; data available. 5. As compared to Dentsply Sirona Calamus®; data available.
*The battery capacities of the Flow and Pack handpieces allow for them to be used up to five procedures per day on a single charge.



Gutta-Smart™ + Conform Fit™ Gutta-Percha

Product references

Gutta-Smart™ Cordless Obturation Device



Gutta-Smart™ Kit Contents	Item#
	B00GSIQ000KIT
1 Flow Handpiece	
1 Pack Handpiece	
1 Base Station	
2 Gutta-Percha Cartridges	
3 Electric Heat Pluggers	
1 Heating Element	
1 Bending Tool	
1 Power Adapter + 4 Universal Plugs	
2 Cleaning Caps	

Gutta-Smart™ Conform Fit™ Gutta-Percha Cartridges



Description	Pack	Item#
20 gauge	10-pack	BNSGSIQA0020G
23 gauge	10-pack	BNSGSIQA0023G
25 gauge	10-pack	BNSGSIQA0025G

Gutta-Smart™ Thermal Response Tip



Quantity	Item#
1 TIP	B00GSIQ100000

Gutta-Smart™ Electric Heat Plugger



Description	Pack	Item#
Small (40/.025)	1 ea.	B00GSIQ100SML
Medium (50/.05)	1 ea.	B00GSIQ100MED
Large (60/.06)	1 ea.	B00GSIQ100LRG

TruNatomy™ Conform Fit™ Gutta-Percha



Color	Size	Pack	Item#
Yellow	Small	60-pack	B00TNGPF00SML
Red	Prime	60-pack	B00TNGPF00PRM
Green	Medium	60-pack	B00TNGPF00MED
Assorted	S/P/M	60-pack	B00TNGPF00AST

ProTaper Gold® Conform Fit™ Gutta-Percha



Color	Size	Pack	Item#
Yellow	F1	60-pack	B00PGGPF000F1
Red	F2	60-pack	B00PGGPF000F2
Blue	F3	60-pack	B00PGGPF000F3
Assorted	F2/F3	60-pack	B00PGGPF00F23
Assorted	F4/F5	60-pack	B00PGGPF00F45

ProTaper Next® Conform Fit™ Gutta-Percha



Color	Size	Pack	Item#
Red	X2	60-pack	B00PNGPF000X2
Blue	X3	60-pack	B00PNGPF000X3
Black	X4	60-pack	B00PNGPF00X23
Yellow	X5	60-pack	B00PNGPF00X45

WaveOne® Gold Conform Fit™ Gutta-Percha



Color	Size	Pack	Item#
Yellow	Small	60-pack	B00WGGPF00SML
Red	Primary	60-pack	B00WGGPF00PRI
Green	Medium	60-pack	B00WGGPF00MED
White	Large	60-pack	B00WGGPF00LRG
Assorted	S/P/M/L	60-pack	B00WGGPF00AST

All images are the property of Dentsply Sirona, Inc. unless otherwise noted.